

ZINGELA

Safari and River Company



WELCOME TO THE ZINGELA SAFARI AND RIVER COMPANY

A good hour from the tar road, Zingela is situated in the heart of wilderness game country. A romantic riverside bush camp nestled on the banks of the mighty Tugela River, Zingela is a place where you can choose from a wide range of adventure activities or simply relax and absorb the breathtaking scenery. Zingela offers a range of rustic accommodation ranging from furnished Safari tents with starlit showers to thatched en-suite rooms for couples and families.

contact us on zingelabookings@gmail.com

or visit www.zingelasafaris.co.za





INTRODUCTION

MAIN CAMP

Zingela Safaris is located in the Zulu Kingdom halfway between Durban and Johannesburg on the banks of the mighty Tugela River. We form part of a 6000 ha community and privately owned conservation area and are home to the largest and possibly last free ranging population of Giraffe in South Africa. The terrain is rugged enough and remote enough for us to be unfenced and our animals (and guests) roam free. Interconnecting this incredible landscape are over 100km of hiking, running and paddling trails designed to give you access to the best that the area has to offer. Our bush camps and lodges have been hand crafted from natural materials and offer guests a choice of accommodation including Fully Catered romantic en-suite chalets, Self Catered chalets & safari tents as well as campsites and Wild Camping. As a family run business we pride ourselves on our warm hospitality, excellent service, amazing food and fun activities. Join us and abseil down the crags, try your hand at fly fishing or river raft down the Tugela River - you won't be disappointed!

The indicated prices are per person sharing per unit; with a 50% discount for children ages 3 - 12 years old. There is no charge for infants under 3 years of age. We have a once-off Community Conservation Fee which is charged at R70 per adult and R35 per child. This fee is allocated to conserving river health, maintaining hiking trails, and increasing the conservation footprint in the Tugela Valley. Members of the local community are employed to fulfill these roles. We have a whole range of adventurous activities which are optional extras.

contact us on zingelabookings@gmail.com

or visit www.zingelasafaris.co.za



CULLINARY

INDULGE IN ZINGELA CATERED HOSPITALITY



Please note that, apart from the “Larney Lane” rooms; the prices are excluding meals. You are most welcome to join us for meals at the main camp. Please may you kindly indicate which meals you wish to be catered for on booking, so that the kitchen can plan ahead for catering purposes. We are far away from town so can't just pop out for a top up when needed. However, in an emergency we can always make a plan to feed the hungry.

We are happy to cater for special dietary requirements. Please indicate your requirements on booking. If you have small children that get hungry after a long day of adventures, we are happy to serve a kiddies meal at about 6pm. Please indicate on booking if this will be required.

Breakfast - R135 pp@8am
Lunch - R125 pp@1pm
Dinner & Dessert - R180 pp@7pm

contact us on zingelabookings@gmail.com or visit www.zingelasafaris.co.za

ACTIVITIES

The Zulu Kingdom boasts superb all year round sub-tropical weather with an average of 320 days of sunshine a year! Zingela's average rainfall of 600mm falls mainly over the summer months. This is when the peaceful Tugela wakes up from its hibernation and provides some of the most exciting rafting in the country. With these statistics in mind you might decide to do absolutely NOTHING while unwinding at Zingela. The camp is ideally situated for guided game walks, birding, trail running, mountain biking or fishing. Sitting in the shade of a thorn tree with a good book is also a wonderful alternative. African time rules here and the Tree of Idleness might find you a common visitor!

Adventure activities are largely dictated by the seasons and nature has provided a wonderful playground. The river for rafting, kayaking and fishing; the cliffs for rock climbing and abseiling and spectacular terrain for 4x4s, quad and mountain biking. The variety of flora and fauna make every walk an adventure.

WHITE WATER RAFTING & KAYAKING

There is an excellent 20km stretch of rapids and pools on this section of the Tugela Canyon including the intimidating Washing Machine and Finger Rock rapids. Water levels alter the mood of the river but whether the river rises along with adrenalin levels or whether the water converts to a "smell the roses" experience, these adventure trips are unforgettable. Rafting on big water is traditionally between November and April but as always Mother Nature has the final say! On big water we use the eight and four man rafts while in lower water the two man crocs and one man kayaks are ideal. Our experienced guides are trained by and registered with the African Paddling Association. Many of our clients are novices so no previous rafting experience is necessary. The rates range from R300 pp for a half day trip, to R650 for a full day epic adventure. The half day trips start at 10H00 and 14H00. This activity must be booked and paid prior to your arrival to ensure that we have sufficient qualified guides for these adventures.

MOUNTAIN BIKING & ADVENTURE BIKES.

Zingela offers some wonderful single track riding and interspersed with rugged 4x4 vehicle bush tracks. The ride in from both Weenen & Colenso offers 30kms plus dirt road riding at its best.

The abundance of game in the bushveld wilderness adds to the riding experience. Guests are welcome to bring their own mountain bikes, quads and motorbikes. Please let us know if you are arriving with motorbikes just in case we have a tranquil event planned. Kindly comply with our "no riding in camp" policy.



ACTIVITIES

ABSEILING

The cliffs overlooking the Tugela Canyon provide dizzying abseil sites. Face your fear or watch other participants step over the edge. Registered, experienced guides are there to provide reassurance and safety. The rates are R300 per person, half price for children (3 - 12 yrs). This activity must be booked and paid for prior to your arrival to ensure that we have sufficient qualified guides for these adventures.

ROCK CLIMBING

We have set up a rock-climbing site just upriver of the main camp; which provides a great opportunity for beginners as well as intermediate climbers to get those quads working. The rates are R100 per person, half price for children (3 - 12 yrs). This activity must be booked and paid for prior to your arrival to ensure that we have sufficient qualified guides for these adventures.

FLY FISHING

Fly fishing for Yellows in the Tugela river is not only a sport but a passion. With over 20km of river to explore you are spoilt for choice! Please support our Tugela River Conservation initiative by paying a R100 rod fee per person per day. Half price for minors (under 12 years old). Rest assured your money is well on monitoring river health and conservation. Please request a copy of Zingela's fishing policy if you would like more information.



SHAYAMOYA

LARNEY LANE

It is difficult to describe Zingela accommodation as each room is different from the next. Built from local materials the site has determined the design. Embracing the environment each of these unique units has their own “under the stars” bathrooms.

SHAYAMOYA    

(Zulu for where the wind blows) Another room with a view and especially so from the cast iron bath. Two 3/4 bed and space for a third child's bed.

NB : Lunch may be preordered at **R125 pp**

SHAYAMOYA
DINNER, BED & BREAKFAST / SLEEPS 2+

LOW SEASON
R1400 P.P

SHAYAMOYA
DINNER, BED & BREAKFAST / SLEEPS 2+

HIGH SEASON
R1550 P.P

Click Here ↑



DAWSONS

LARNEY LANE

DAWSONS



Is a spacious romantic unit. Built off river rocks and thatch it embraces the outdoors. 1 x kingsize bed and 1 x single



DAWSONS
DINNER, BED & BREAKFAST / SLEEPS 2+

LOW SEASON
R1400 P.P

DAWSONS
DINNER, BED & BREAKFAST / SLEEPS 2+

HIGH SEASON
R1550 P.P

[Click Here ↑](#)

NB : Lunch may be preordered at R125 pp



HITCHENS

LARNEY LANE

HITCHENS

SAFE



MINIBAR



SHOWER



TOWELS



SMOKING
ALLOWED



RUSTIC OPEN-AIR
FEATURES



Boasts the biggest headboard in Africa. Built amongst the natural stone with spectacular views over the river it's rightfully dubbed the Honeymoon suite. 1 x kingsize

NB : Lunch may be preordered at **R125 pp**

HITCHENS

DINNER, BED & BREAKFAST / SLEEPS 2+

LOW SEASON
R1400 P.P

HITCHENS

DINNER, BED & BREAKFAST / SLEEPS 2+

HIGH SEASON
R1550 P.P

Click Here ↑



FAMILY UNITS

EDDIES FAMILY UNIT

Eddies A and B consists of two thatched units; each with a queen bed; two bunk beds and separate bathrooms. The toilets are undercover, but the showers (and bath in Eddies B) are open to the stars for a true African experience. They have been renovated recently and now the rooms have actual sliding doors – a rarity for Zingela. These two rooms are ideal for families with children due to proximity to the main camp. Both units are separated by a small veranda with a fireplace.

EDDIES A

SAFE SHOWER



EDDIES B

SAFE SHOWER BATH



EDDIES A & B

DINNER, BED & BREAKFAST / SLEEPS 2+

LOW SEASON
R1400 P.P

EDDIES A & B

DINNER, BED & BREAKFAST / SLEEPS 2+

HIGH SEASON
R1550 P.P

Click Here ↑

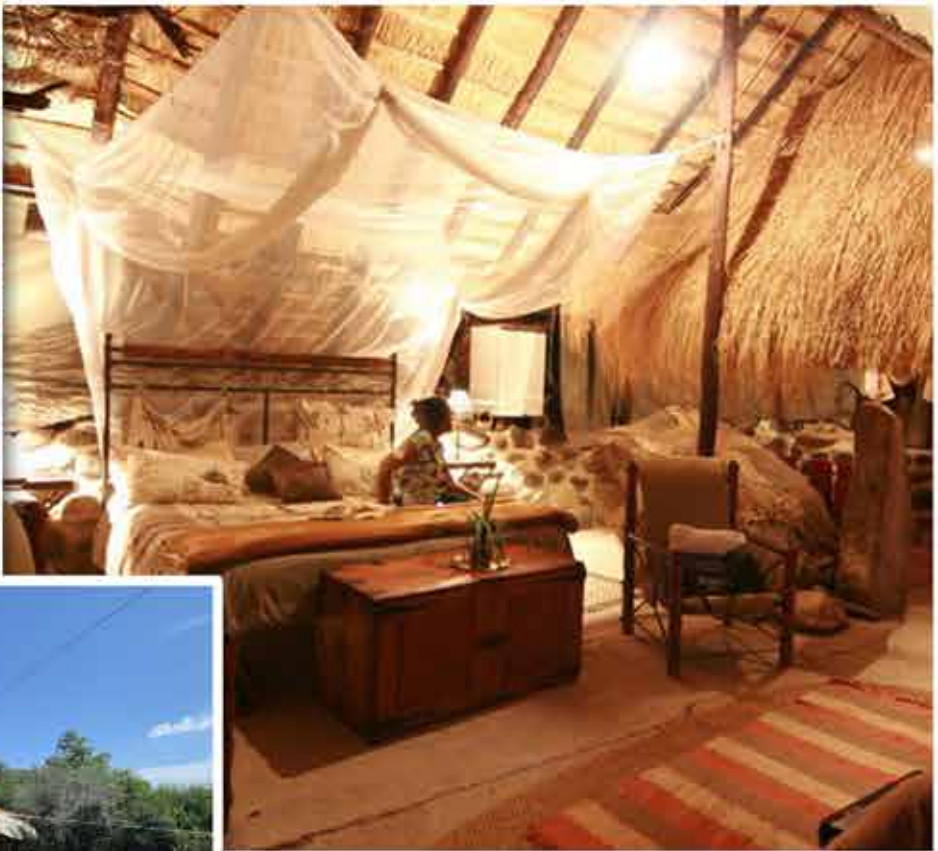


JAMES CAMP

JAMES CAMP



This self-catered camp consists of 2 luxurious thatched en-suite units known as James 1 and James 2, as well as 4 safari tents. James 1 has an open upstairs area with 2 single beds, which is suitable for kiddies. James 2 is spacious enough to add 2 extra beds if required for families. There are two large central areas; one of which is equipped as a self-catering kitchen, and the other as the dining room/ lounge area. An exquisite plunge pool has recently been added to James' camp, making it the ideal venue to book out for family or friend groups. It offers a relatively private area away from the busyness of the main camp. It is ideal for kiddies due to the pool, large lawns in front, the sandy "beach" next to the river, and the swing hammocks. Enticing views will lure you to the river where you can spend the day swimming, reading, bird watching or fly-fishing.



Click Here ↓

JAMES 1

SELF-CATERED / SLEEPS 4

LOW SEASON
R600 P.P

JAMES 1

SELF-CATERED / SLEEPS 4

HIGH SEASON
R660 P.P

JAMES 2

SELF-CATERED / SLEEPS 2+

LOW SEASON
R600 P.P

JAMES 2

SELF-CATERED / SLEEPS 2+

HIGH SEASON
R660 P.P

FAMILY UNITS

ALOES & HOTEL



Aloes and Hotel are some of the older units; each consisting of 2 thatched en-suite units separated by a small veranda. These 4 rooms are conveniently close to the main camp and have a beautiful river frontage view. They have access to a small, shared self-catering kitchen. There is also adequate space to set up safari and dome tents between the rooms or on the extensive lawn in front of the units. There are two toilets and two showers in close proximity to cater for the campers. These units are perfect for friends or small families.

ALOES A & B
SELF-CATERED / SLEEPS 2+

LOW SEASON
R600 R.P

ALOES A & B
SELF-CATERED / SLEEPS 2+

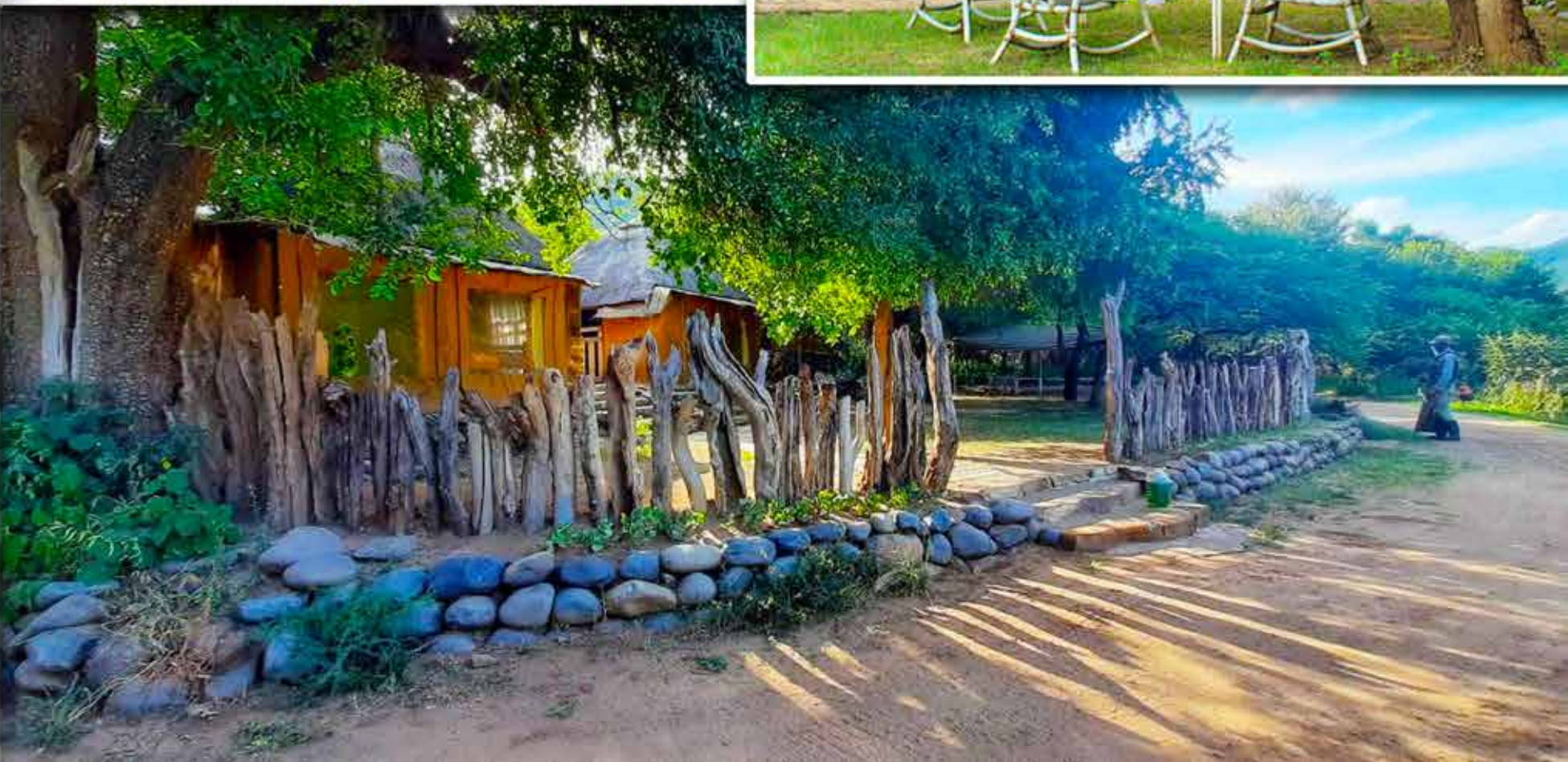
HIGH SEASON
R660 R.P

HOTEL A & B
SELF-CATERED / SLEEPS 2+

LOW SEASON
R600 R.P

HOTEL A & B
SELF-CATERED / SLEEPS 2+

HIGH SEASON
R660 R.P



BADLANDS

BADLANDS 1 & 2

SAFE SHOWER



Badlands 1 and 2 can be found across the bridge from James Camp and are situated on a little outcrop. Glass sliding doors allow for a stunning view of the Tugela River. The units each have a double bed and are ideal for nature-loving couples wanting simplicity. These units are conveniently close to James' camp to utilize the facilities, should you be part of a group.

BADLANDS 1 & 2
SELF-CATERED / SLEEPS 2+

LOW SEASON
R525 P.P

BADLANDS 1 & 2
SELF-CATERED / SLEEPS 2+

HIGH SEASON
R575 P.P

Click Here ↑



HOUSE ON HILL

HOUSE ON HILL



The recently re-thatched old farmhouse gets the first and last of the winter sun. The position of the house gives those who stay there a panoramic, eagles-eye view of the majestic Tugela river. It consists of 5 bedrooms, one of which is en-suite; 1 safari tent, as well as a self-catering kitchen and a paved courtyard leading down to a little plunge pool. The outside showers boast the most incredible views over the valley. This is an ideal venue for small groups; family functions or those who need privacy and uninterrupted inspiration! The accommodation is about 1km away from main camp so pack your day bag and take a gentle stroll down the stairs, past James camp towards main camp to join us for activities or meals. Or you may prefer to take a short drive between the two camps.

HOUSE ON HILL
SELF-CATERED / SLEEPS 8+

LOW SEASON
R600 P.P

HOUSE ON HILL
SELF-CATERED / SLEEPS 8+

HIGH SEASON
R660 P.P

Click Here ↑



SAFARI TENTS

SAFE

SHOWER

KITCHEN

SAFARI TENTS



We offer canvas safari-style tents which are equipped with 2 to 4 beds (bedding included), lights, a small table, and a verandah. These safari tents are permanently set up at either James camp or Camp Site; where you have access to a self-catering kitchen, braai facilities and ablutions. They are spacious and comfortable and are extremely popular with those who prefer a “glamping” option. The bigger 4 sleeper tents are suitable for families with young children who wish to share.

SAFARI TENTS

SELF-CATERED / SLEEPS 2 - 4

LOW SEASON

R400 P.P

SAFARI TENTS

SELF-CATERED / SLEEPS 2 - 4

HIGH SEASON

R440 P.P

Click Here ↑



DOMES TENTS

DOMES TENTS

SHOWER

KITCHEN



We offer canvas dome tents which are equipped with 2 stretchers (bedding included), lights and a small table. These are perfect for people wanting comfortable simplicity. These tents can be set up wherever you wish such as at Camp site, James' camp or House on Hill, where you have access to a self-catering kitchen, braai facilities and ablutions. This usually works well as part of a group that is already booked into James' camp or House on Hill, for example. Alternatively, if you are feeling adventurous, we can set these dome tents up at our "wild camping" sites such as Marula bend, Warthog island or Finger Rock. The camping possibilities are endless and can be adapted to your needs.

DOMES TENTS
SELF-CATERED / SLEEPS 2

LOW SEASON
R300 P.P

DOMES TENTS
SELF-CATERED / SLEEPS 2

HIGH SEASON
R325 P.P



CAMPING

SHOWER KITCHEN

CAMPING



The Camp site is situated between Main camp and James' camp and boasts a funky open air communal kitchen with braai facilities; 3 hot water showers and 3 separate toilets. It offers lovely, shady spots to hang your hammock and read your book, beautiful scenic areas to cast your line and a cozy campfire to enjoy sundowners. It is a beautiful area suitable for those looking to be relatively close to the Main Camp but still enjoy being self-sufficient. Other popular spots for camping are James' camp or House on Hill. This usually works well as part of a group that is already booked into James' camp or House on Hill. We also have a new camp site, named the "Cliff camp site" due to the majestic cliffs nearby, which catch the last rays of the winter sun. This camp site is just downstream from James's camp; over the little bridge (mind the trolls!), and past Badlands. It has a lovely newly built safari-style ablution block. There are currently no self-catering facilities here; so you have the option to use James' camp kitchen (if you are part of that group); to bring your own catering equipment; or join us at main camp for pre-booked meals.



DOMES TENTS

SELF-CATERED / SLEEPS 2

LOW SEASON
R300_{P.P}

DOMES TENTS

SELF-CATERED / SLEEPS 2

HIGH SEASON
R325_{P.P}

OWN TENTS

SELF-CATERED

LOW SEASON
R180_{P.P}

OWN TENTS

SELF-CATERED

HIGH SEASON
R195_{P.P}

Click Here ↑

WARTHOG ISLAND

If you are feeling adventurous, we can set these dome tents up at our “wild camping” sites such as Marula bend; Warthog island and Finger Rock. Marula bend camp site has 1 toilet and a bucket shower, but no running water or electricity. Warthog island has 2 toilets and 3 showers. Please note that you will need to bring all your own catering equipment for these wild campsites – or you are welcome to join us at the main camp for meals and activities if you wish. The Finger Rock campsite is quite remote, about 6 km downriver from main camp. Please note that you will need to bring ALL your own camping equipment, water, etc. for this wild campsite. It is just you and nature in splendid isolation!

DOMES TENTS
SELF-CATERED / SLEEPS 2

LOW SEASON
R300 P.P

DOMES TENTS
SELF-CATERED / SLEEPS 2

HIGH SEASON
R325 P.P

OWN TENTS
SELF-CATERED

LOW SEASON
R180 P.P

OWN TENTS
SELF-CATERED

HIGH SEASON
R195 P.P

Click Here ↑



HIGH SEASON DATES

16th December 2024 - 14th January 2025

21st March - 6th April 2025

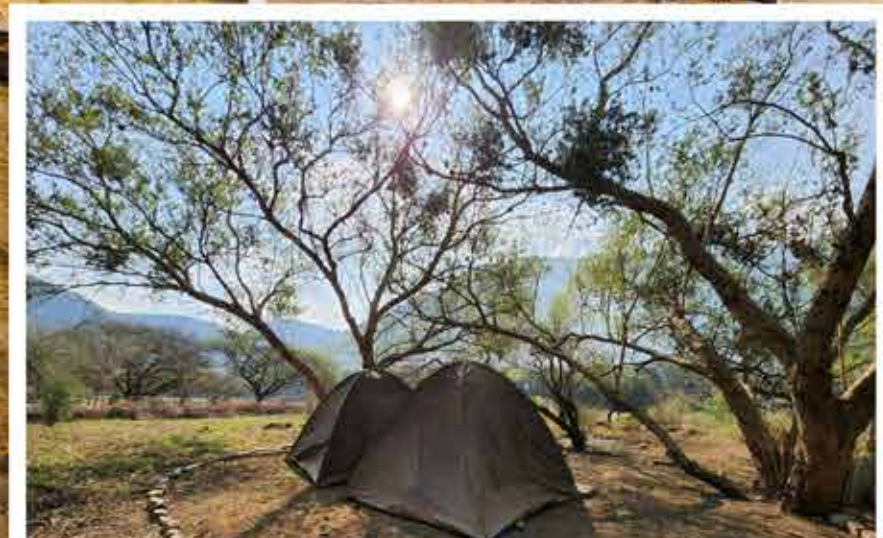
18th April - 4th May 2025

14th - 16th June 2025

28th June - 20th July 2025

24th September - 12th October 2025

13th December 2025 - 11th January 2026



contact us on zingelabookings@gmail.com

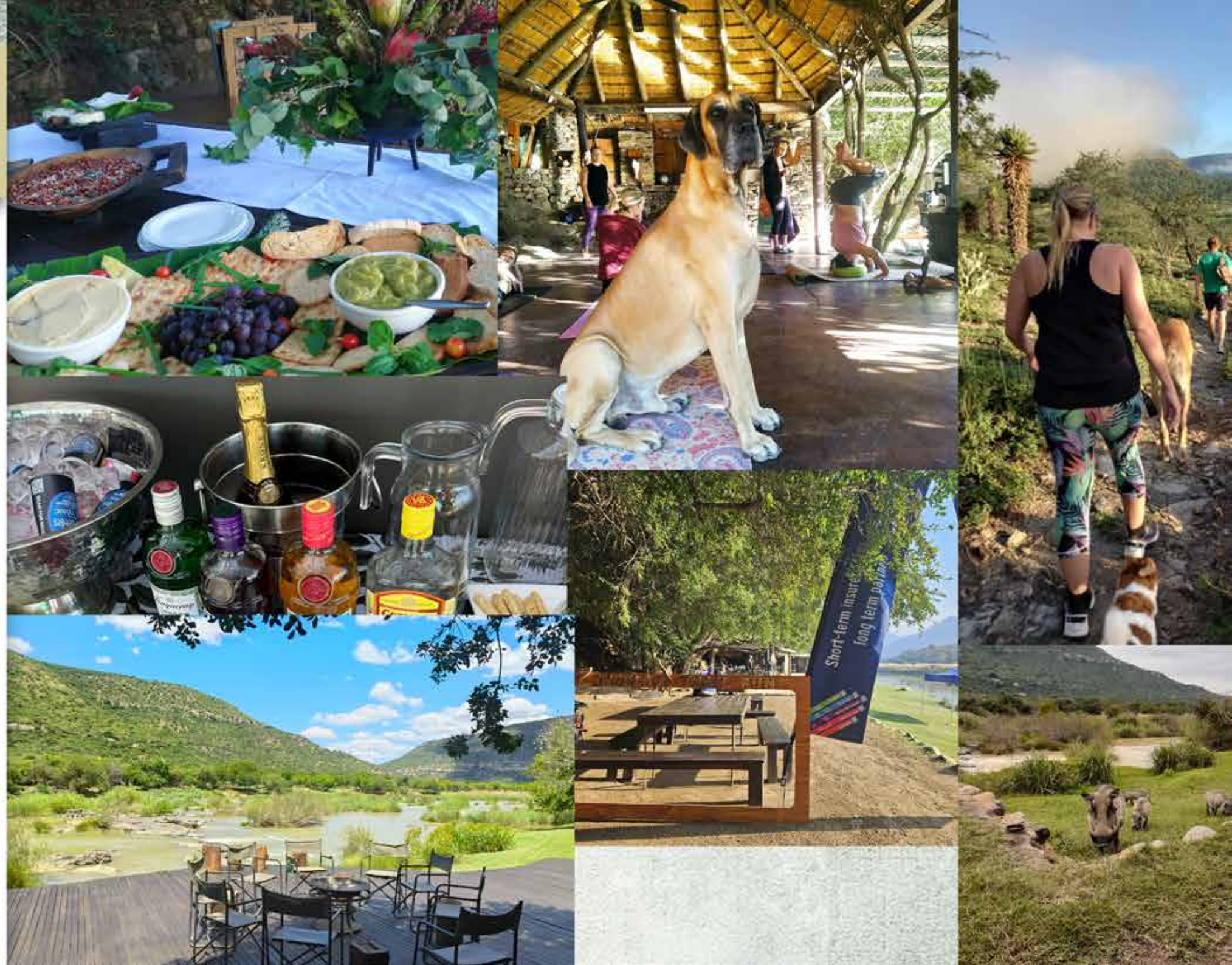
or visit www.zingelasafaris.co.za

EVENTS

AT ZINGELA

There are many exciting events planned for 2025! The incredible ZINGELA TRAIL RUN is on the 16th to 18th May 2025. This is a popular event so please head over to www.zingelatrailrun.co.za and book your place soon. This year we will be hosting a HERITAGE DAY FESTIVAL from the 24th to 28th September 2025.

There will be music and fun activities included so please note that a surcharge will apply over this time. Details will follow closer to the time. We will also run various specials over the course of 2025. Zingela is a magical place to celebrate milestones such as birthdays or anniversaries. It is also a great venue for Bull's parties due to the variety of adventurous activities and, of course, the ever-popular bar! You may wish for a specific meal such as a delectable wild boar on the spit; or a special set up for sundowners and snacks at sunset rock. We are happy to coordinate these special events for you during low season. Please note that for big events/exclusivity there may be additional charges. We regret that we will not be hosting weddings during 2025.



RESEARCH

Zingela is a prime choice for research based conservation field trips as it is safe, interesting and diverse with great opportunities for structured and semi structured educational activities. It is a truly African destination that is wild yet not dangerous, exciting yet not scary and accessible yet isolated.

Zingela forms the core of a 12,000ha unfenced wilderness area which offers opportunities to study animal distribution and abundance and all the wonderful interactions and behaviours that influence this in about as natural looking an environment as you could find. There are Leopards but no truly dangerous game and this allows the relatively safe and relaxed study of the abundant wildlife by University, Technicon and school groups by vehicle, bicycle, kayak or on foot. The research and conservation projects are mostly "hands on" and require every member of the group to participate and contribute while the data collected is used to guide the management of the protected area and also spread environmental awareness within the surrounding Zulu communities. Two thirds of the land is community owned and the community directly benefits from the protection, use and management of the area.

Zingela has a strong research ethos headed up by the on-site owner/manager Dr. Peter Calverley who holds a PhD in Conservation Ecology, is an Honorary Researcher at the University of KwaZulu-Natal and is an active publishing academic. Peter has partnered with several equally qualified and experienced scientists to put Zingela firmly on the map as a top research destination in South Africa. All data collected is open source and accessible to the greater scientific community and, as such, students participating in our research projects are welcome to use their data, as well as any historical data sets, for their own academic advancement. We feed the data into our ever evolving Environmental Management Plan which is itself open source.



contact us on zingelabookings@gmail.com

or visit www.zingelasafaris.co.za

ZINGELA CONTACT INFO LINKS | DIRECTIONS & T&C'S



*Click Above icons to follow us on
Social Media*

GENERAL INFO

CHECK IN FROM 2PM, CHECK
OUT FROM 10AM. CASH
PAYMENTS BY ARRANGEMENT.
CARD FACILITIES AVAILABLE
FOR BAR TABS AND ACTIVITY
PAYMENT. ACCOMMODATION
TO BE SETTLED IN FULL
BEFORE ARRIVAL.

Children under 12 less 50%
Infants 0 – 3 No charge

Conservation Fee of R70 per
adult and R35 per child:

Use of tracks for mountain
biking and trail running or self-
guided hikes Casual use of boats
and life jackets to paddle in the
pools close to main camp

EXCLUDED:

4x4 transfers @ R600 per vehicle
return (7 seater) R400 from
Doreen's Homestead

Optional additions for Self-Catering

BREAKFAST

R135 P.P
@8AM

CLEANER
DEPENDENT ON THE SIZE
OF THE GROUP

R250-R500
PER CAMP

LUNCH

R125 P.P
@1PM

**JEJE ZULU
BREAD**

R45

DINNER (INCLU DESSERT)

R180 P.P
@7PM

Self-caterers are welcome to book meals at the
main camp or to be delivered to their units.

We have a fully stocked bar which runs on a tab
basis, as well as a beautiful little shop which stocks
various essentials, snacks, Zulu crafts and Zingela
clothing. It is well worth a visit when you are visit-
ing our reception.

Please note that all the catering charges are half
price for children (3 - 12 yrs). Please may you
kindly indicate which meals you wish to be ca-
tered for on booking, so that the kitchen can plan
ahead.

Optional Activities

RIVER RAFTING AND PADDLING

R300 P.P - R650 P.P

ABSEILING AND ROCK CLIMBING

R300 P.P - R100 P.P

WILD BOAR FEEDING

R25 P.P

GAME WALK OR GIRAFFE WALK

R150 P.P

NIGHT-TIME SCORPION HUNT

R25 P.P

FLY-FISHING

R100 PER ROD

4 X 4 GAME DRIVE

R250 P.P

Please note that all the activities charges are half price for children (3 - 12 yrs).

contact us on **zingelabookings@gmail.com**

or visit **www.zingelasafaris.co.za**

ZINGELA CAMP MAP

